



MAPLES  
GROUP

# PRIVATE ASSET SOLUTIONS

Putting our experience to work

[maples.com](http://maples.com)

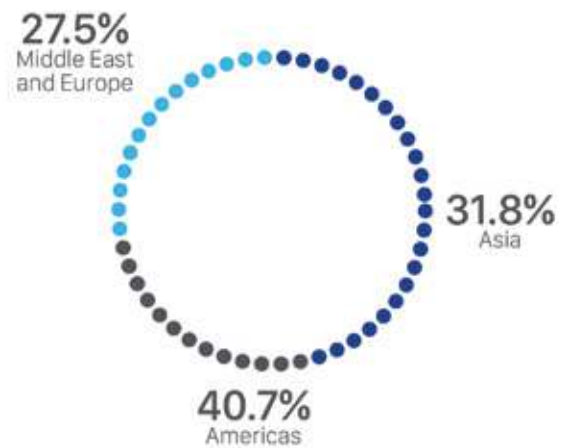


# PRIVATE ASSET FUND SERVICES

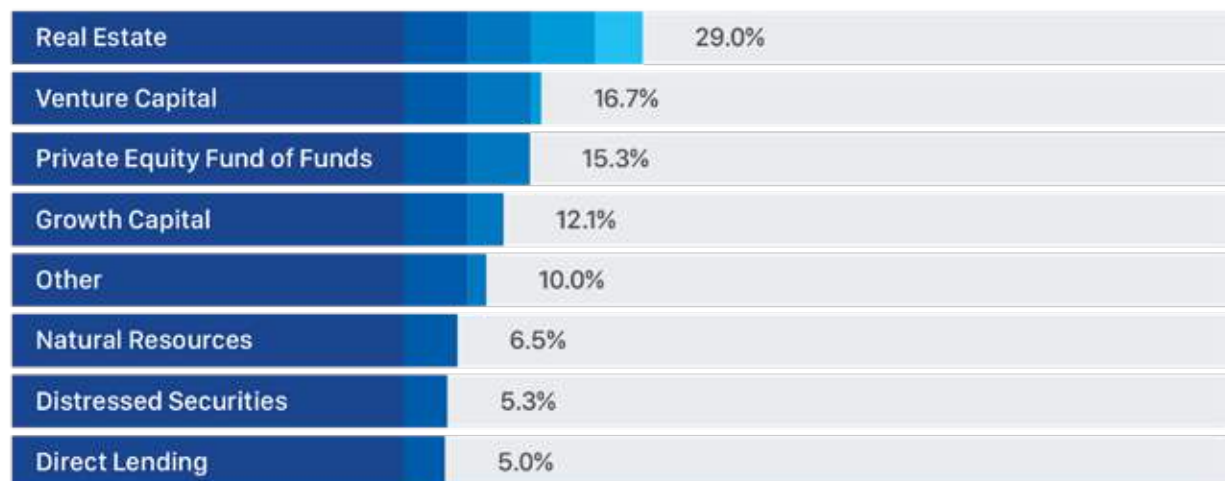
The effective management and administration of private assets demands the support of people who understand each fund's unique challenges and objectives. The Maples Group's expert team brings deep experience working with private asset funds and has an outstanding service record with our clients.

Our skilled team specialises in a wide range of sectors, disciplines and structures, including infrastructure, technology, media and telecommunications, real estate, education, energy, private equity, venture capital, mezzanine and fund of funds.

## Private Asset Funds Administered by Region



## Private Asset Strategies Serviced



# PUTTING OUR EXPERIENCE TO WORK

Our international, multi-jurisdictional presence, approach to client service and our experience dealing with the complexities of private asset vehicles makes us a compelling choice for supporting the requirements of both general partners (“GPs”) and limited partners (“LPs”). This knowledge and insight, backed by our extensive technological infrastructure and global footprint, allows us to provide customised solutions that create value, enhance effective management and absorb as many operational challenges as possible.

Our experienced teams are led by qualified accountants with expertise in accounting for private assets, complex allocations and fee calculations, safekeeping of assets, oversight and monitoring the events that trigger waterfalls throughout the life cycle of each fund.

The Maples Group offers a single point of contact for each client who will manage the relationship from the onboarding process through to the ongoing daily operational interactions with the LP and GP.

Through continuous innovation, we have developed an optimal balance of best-of-breed core systems and bespoke proprietary systems that allow us to be dynamic in responding to our clients’ needs as they evolve in response to regulatory and investor demands.

With more than 270 conversions over the past 10 years, the Maples Group has established the processes, policies and procedures to ensure a seamless migration that retains critical records necessary to generate inception to date internal rate of return, carried interest and waterfall modeling.

Our services include:

## **Fund Launch / Establishment**

- Reviewing all legal documentation, including limited partnership agreements, private placement memoranda and other supporting documentation, from an operational perspective;
- Ensuring all agreements are in place and regulatory filings completed;
- Managing compliance and due diligence requirements, including Know Your Client (“KYC”) and anti-money laundering (“AML”) LP verification for applicable jurisdictions;
- Ongoing coordination with intermediaries, including legal advisors, auditors, regulators and custodians;
- Establishing the general ledger and creating a chart of accounts for the fund; and
- Establishing an online reporting portal tailored to GP and LP specifications.

## Partnership Accounting

- Accounting for private assets, including direct and co-investment opportunities and special purpose vehicle investments across various jurisdictions;
- Processing expense payments and ensuring they are in accordance with fund policies;
- Reconciling cash and positions to third party statements or relevant transaction documents verifying that the fund holds title interest in those assets;
- Ensuring the value of the investment interests of the private fund are calculated in accordance with the offering memorandum or other governing documents;
- Verifying that transactions involving the private fund's assets, any consideration is remitted to / paid from an account in the name of the private fund and is not used to finance operations of the GP, including review of reimbursements to the GP to ensure compliance with the policies in this regard disclosed in the governing documents;
- Ensuring proper execution of capital calls and distributions in regards to investment interests of the private fund and implementing procedures to identify significant cash flows that may be inconsistent with the fund's operation;
- Monitoring that the allocation of profit and loss on portfolio assets and other income and expenses of the private fund as calculated by the GP is in accordance with the governing documents;
- Holding any non-custodial assets which belong to the private fund which are not held in custody by an independent custodian;

- Performing waterfall calculations and determining carried interest in accordance with fund documents; and
- Preparing financial statements for the fund, including relevant note disclosures under IFRS or GAAP accounting standards and assisting in the audit process by providing relevant accounting records and supporting schedules.

## Investor Relations

- Performing investor due diligence, including KYC and AML services in accordance with applicable jurisdictional AML legislation;
- Processing capital calls, distributions and expense payments on behalf of the fund, ensuring that the capital calls and distributions are executed through an account in the name of the private fund;
- Maintaining the investor register of the fund;
- FATCA and CRS filings for applicable jurisdictions;
- Operating, monitoring and reconciling bank accounts in required currencies on behalf of the fund;
- Providing secure, online access to investor reporting, including contract notes, statements, notices and other ancillary documents and correspondence; and
- Providing timely responses to ad hoc enquiries from investors and their authorised representatives.

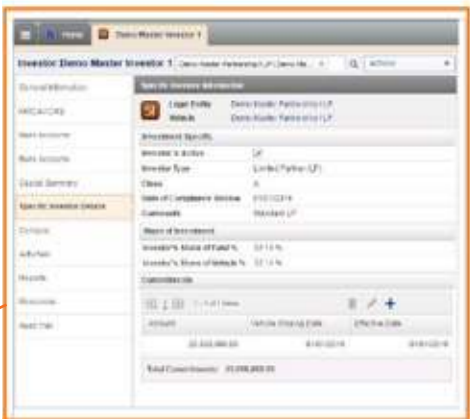
# TRANSPARENT INVESTOR-LEVEL ALLOCATIONS

## From Agreements to Waterfalls

Built around FIS Investran's industry leading fund accounting platform, the Maples Group's technology provides a fully integrated intuitive workflow that captures the specific terms of each fund's allocations, fee calculations and waterfalls through a robust platform that allows for:

- Bespoke translation of fund limited partnership agreements into unique structured profit and loss allocations, carried interest and European and US waterfall calculations;

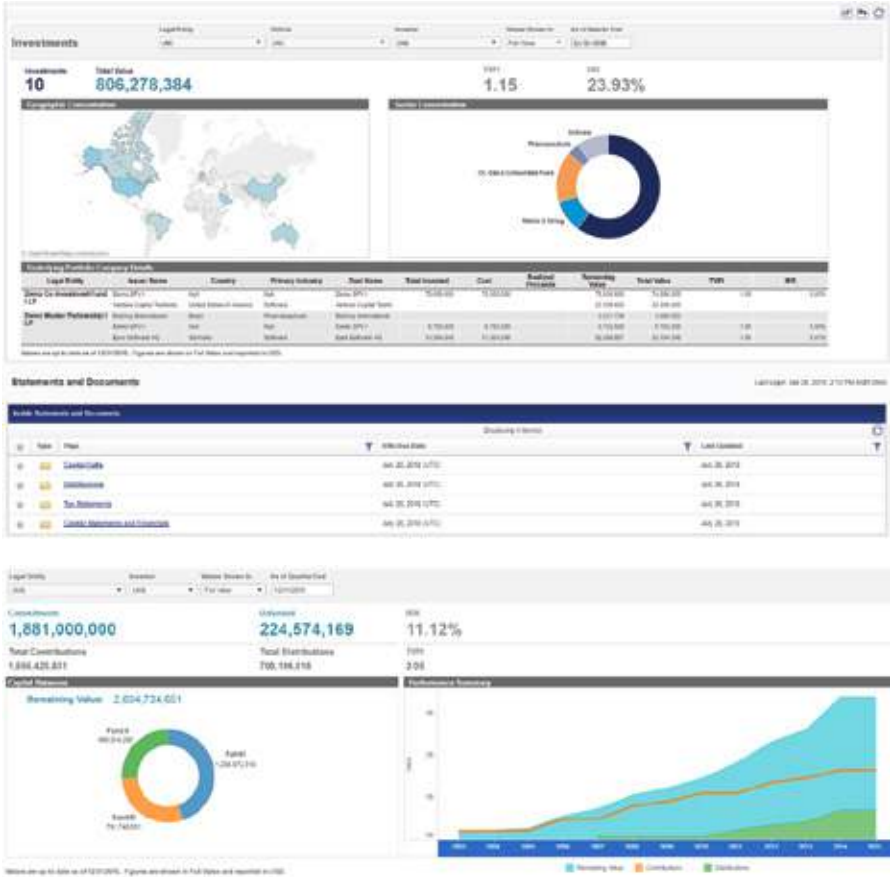
- Integrated fund accounting and investor services software that removes data entry and spreadsheet risk; and
- A flexible framework approach to optimise data and improve control.



Investor Number	Investor Name	Capital Commitment	Preferred Return	Total Called Capital	Chg Unrealized MV	Realized MV Gain/Losses	Organizational Costs
GP	Investor 16	10,000.00	72.00	3,253.82	-328.69	598.79	-1.98
LP1	Investor 1	215,000.00	1,549.00	69,958.20	-7,066.84	12,873.96	-42.48
LP2	Investor 2	1,500,000.00	10,805.00	488,080.53	-49,303.51	89,818.30	-296.35
LP3	Investor 3	750,000.00	5,403.00	244,040.28	-24,651.76	44,909.15	-148.18
LP4	Investor 4	600,000.00	5,076.00	226,356.97	-19,721.41	35,927.32	-118.54
LP5	Investor 5	3,000,000.00	21,611.00	976,180.52	-98,607.03	179,636.60	-592.71
LP6	Investor 6	100,000.00	721.00	32,538.84	-3,206.90	5,987.89	-19.76
LP7	Investor 7	125,000.00	1,058.00	47,157.92	-4,108.63	7,484.86	-24.70
LP8	Investor 8	400,000.00	3,383.00	150,904.84	-13,147.60	23,951.55	-79.03
LP9	Investor 9	300,000.00	2,161.00	97,616.00	-9,860.70	17,963.66	-59.27
LP10	Investor 10	400,000.00	2,881.00	130,154.87	-13,147.60	23,951.55	-79.03
LP11	Investor 11	350,000.00	2,962.00	132,041.66	-11,504.15	20,957.60	-69.15
LP12	Investor 12	5,000,000.00	36,018.00	1,626,934.20	-164,345.05	299,394.34	-987.85
LP13	Investor 13	200,000.00	1,843.00	94,757.55	-6,573.80	11,975.77	-39.51
LP14	Investor 14	350,000.00	2,522.00	113,885.42	-11,504.15	20,957.60	-69.15
LP15	Investor 15	500,000.00	3,602.00	162,693.70	-16,434.51	29,939.43	-98.78
LP16	Investor 17	10,000,000.00	72,034.00	3,253,867.74	-328,690.10	598,768.67	-1,975.69
LP17	Investor 18	500,000.00	3,602.00	162,693.70	-16,434.51	29,939.43	-98.78
LP18	Investor 19	1,000,000.00	7,203.00	325,386.84	-32,869.01	59,878.87	-197.57
<b>Totals:</b>		<b>27,000,000.00</b>	<b>197,379.00</b>	<b>8,917,578.78</b>	<b>-887,463.27</b>	<b>1,616,729.42</b>	<b>-5,334.37</b>

### Private Asset Dashboards

The Maples Group offers a customisable online reporting portal which provides views for specific qualitative and quantitative attributes and allows users to quickly source required data through groupings and sorting by any data attribute for analysis at position level detail and higher level graphical presentation. This enhances the ability of investment teams to actively monitor and manage the sophisticated investment strategies needed to achieve superior risk-return ratios.



# INVESTOR REPORTING

Through our robust and intuitive online reporting platform, LPs and GPs have secure web access to a variety of current and historical documents, including capital statements, call and distribution notices, quarterly and annual financial statements, market updates and newsletters and other relevant fund information.

Our online platform is complemented by email communication. With customisable content, email notification is sent to investors and authorised recipients when a new document is posted to the portal. Emails include an easy click-through feature for securely and directly accessing documents.

The content, layout and format of all investor reporting is ILPA compliant and fully customisable.

Reporting can be co-branded or white labelled.

Profit Statement

Devo Private Equity Fund I  
Cante Partners I

MAPLES GROUP

Statement LP Financial Statement Metrics

Fund Name: CFI  
Year of Statement: December 31, 2016

	2016	2015
<b>Statement</b>	18,703,191	19,322,941
Investment	1,212,999	3,472,215
Realized Net Income	17,490,192	15,850,726
Realized Net Income - Fees	(9,291)	6,431
Realized Net Income - Expenses	17,480,901	15,857,157
Realized Net Income - Distributions	16,267,910	14,645,726
Realized Net Income - Other	1,212,999	1,212,999
Realized Net Income - Other (Net)	0	0
Total Realized Net Income	18,703,191	19,322,941
LP Investment	1,212,999	3,472,215
LP Investment - Fees	(9,291)	6,431
LP Investment - Expenses	17,480,901	15,857,157
LP Investment - Distributions	16,267,910	14,645,726
LP Investment - Other	1,212,999	1,212,999
LP Investment - Other (Net)	0	0
Total LP Investment	18,703,191	19,322,941
LP Capital	18,703,191	19,322,941
LP Capital - Fees	(9,291)	6,431
LP Capital - Expenses	17,480,901	15,857,157
LP Capital - Distributions	16,267,910	14,645,726
LP Capital - Other	1,212,999	1,212,999
LP Capital - Other (Net)	0	0
Total LP Capital	18,703,191	19,322,941

MAPLES GROUP

Home About Account Overview Reporting and Analytics Statements and Documents Financial Reporting Fund Files Administration

### Maples Group

**Overview**

**Devo Private Capital Group** is a private capital management firm that provides financial backing and makes investments in the private equity of start-up or operating companies through a variety of investment strategies including leveraged buyout, venture capital, and growth capital.

With our investors, we acquire a controlling or substantial minority position in a company and then look to maximize the value of that investment. We look to exit through one of the following avenues:

- Initial Public Offering — shares of the company are offered to the public, typically providing a partial immediate realization as well as a public market exit which it can later sell additional shares.
- Danger or acquisition — the company is sold for either cash or shares in another company.
- Recapitalization — cash is distributed to our fund as shareholders either from cash flow generated by the company or through raising debt or other sources to fund the distribution.

The group makes longer hold investments in target industry sectors or specific investment areas where we have expertise. We take an operational view to manage risks and achieve growth through long term investments, and we do not act as short-term traders of securities. Instead we seek upside based on a business or industry sector's financial health.

[Link to the Website: https://www.devo.com](https://www.devo.com)

	2016	2015
Contributions	1,212,999	3,472,215
Distributions	(16,267,910)	(14,645,726)
(Withdrawals)	(17,480,901)	(15,857,157)
Net	18,703,191	19,322,941
LP%	100%	100%

© 2016 Devo All Rights Reserved Maples Group Technical Support | Contact Us | Privacy Policy | 1/2016-18



# COMPREHENSIVE SOLUTIONS

The Maples Group offers clients a range of complementary services through the firm's comprehensive legal, fiduciary, fund, regulatory and compliance, and entity formation and management offering.



- Fund Structuring and Establishment
- Directorship Services
- Company Secretarial and Board Support Services
- European Alternative Investments Fund Manager Services
- Custom Data Management, Portfolio Analytics and Technology Solutions
- Institutional Investors Solutions (including bespoke investment structures and strategic relationship agreements)
- Regulatory Reporting Solutions (e.g. AIFMD Annex IV, Form PF)
- Formation Services and Registered Office

# CONTACTS

For further information on our services, please contact:

## Americas

### James Perry

+1 857 256 4327

james.perry@maples.com

### Matthew DeAngelis

+1 646 918 5953

matthew.deangelis@maples.com

## Asia

### Eastern Fong

+852 3655 9005

eastern.fong@maples.com

### Suat Leng Chew

+65 6436 6912

suatleng.chew@maples.com

### Ivy Bao

+852 3690 7657

ivy.bao@maples.com

## Europe

### Christina McCarthy

+353 1 697 3224

christina.mccarthy@maples.com

### Kieran Fox

+353 1 512 3178

kieran.fox@maples.com

## Middle East

### Fred Tabbal

+971 4 511 4201

fred.tabbal@maples.com



The Maples Group is a leading service provider offering clients a comprehensive range of legal services on the laws of the British Virgin Islands, the Cayman Islands, Ireland, Jersey and Luxembourg, and is an independent provider of fiduciary, fund services, regulatory and compliance, and entity formation and management services. The Maples Group distinguishes itself with a client-focused approach, providing solutions tailored to their specific needs. Its global network of lawyers and industry professionals are strategically located in the Americas, Asia, Europe and the Middle East to ensure that clients gain immediate access to expert advice and bespoke support, within convenient time zones.



MAPLES  
GROUP

[maples.com](http://maples.com)